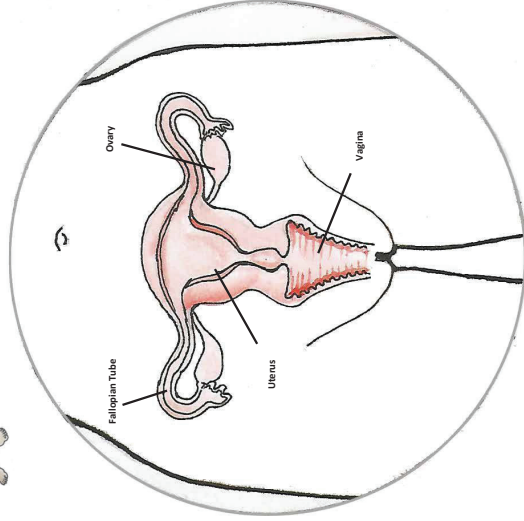
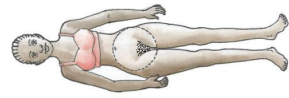
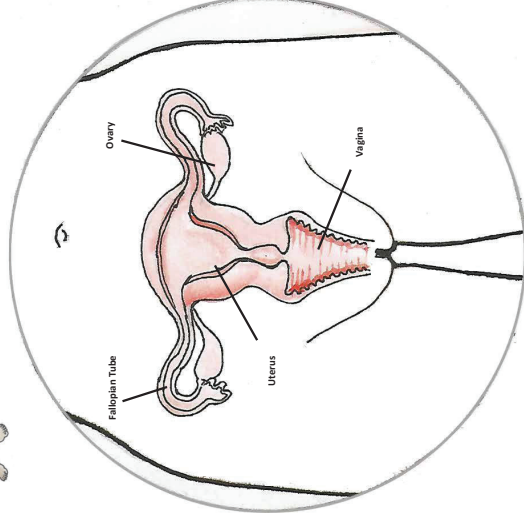




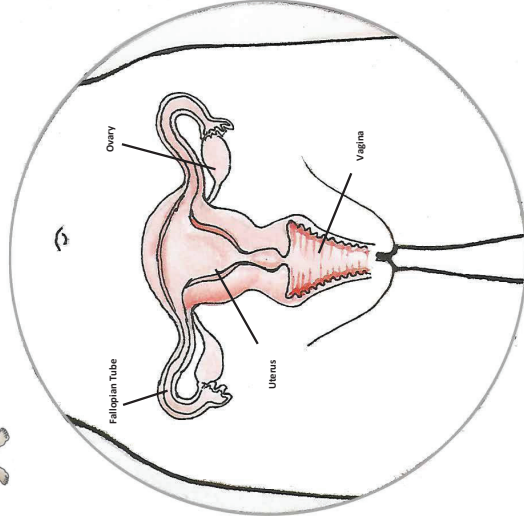
Female Reproductive Organs



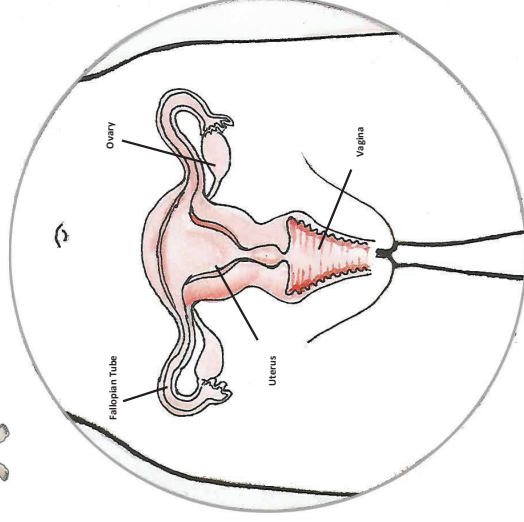
Female Reproductive Organs



Female Reproductive Organs



Female Reproductive Organs



Female Reproductive Organs and Female Fertility

- The vagina is where a man's penis enters a woman during sexual intercourse. It is also the end of the birth canal, which a baby passes through during childbirth.
- The ovaries produce the woman's egg. An egg is released from the ovaries every month. If the egg meets with a man's sperm, it grows into a baby.
- The fallopian tubes carry the woman's egg from the ovary to the uterus.
- The uterus is where an egg that has been fertilized by a man's sperm grows into a baby. Blood slowly builds in the uterus every month. This blood gives nourishment to the growing baby if the egg and sperm meet. If the egg does not meet with a man's sperm, the blood and the egg flow out of the woman during her menstrual period.
- A girl's first menstruation is the sign that she is now fertile, or able to become pregnant.
- A woman can only become pregnant during several days each month, at the time when she has secretions. The woman's egg is released during the time she has secretions. If she has sex at this time, she can become pregnant.

Female Reproductive Organs and Female Fertility

- The vagina is where a man's penis enters a woman during sexual intercourse. It is also the end of the birth canal, which a baby passes through during childbirth.
- The ovaries produce the woman's egg. An egg is released from the ovaries every month. If the egg meets with a man's sperm, it grows into a baby.
- The fallopian tubes carry the woman's egg from the ovary to the uterus.
- The uterus is where an egg that has been fertilized by a man's sperm grows into a baby. Blood slowly builds in the uterus every month. This blood gives nourishment to the growing baby if the egg and sperm meet. If the egg does not meet with a man's sperm, the blood and the egg flow out of the woman during her menstrual period.
- A girl's first menstruation is the sign that she is now fertile, or able to become pregnant.
- A woman can only become pregnant during several days each month, at the time when she has secretions. The woman's egg is released during the time she has secretions. If she has sex at this time, she can become pregnant.

Female Reproductive Organs and Female Fertility

- The vagina is where a man's penis enters a woman during sexual intercourse. It is also the end of the birth canal, which a baby passes through during childbirth.
- The ovaries produce the woman's egg. An egg is released from the ovaries every month. If the egg meets with a man's sperm, it grows into a baby.
- The fallopian tubes carry the woman's egg from the ovary to the uterus.
- The uterus is where an egg that has been fertilized by a man's sperm grows into a baby. Blood slowly builds in the uterus every month. This blood gives nourishment to the growing baby if the egg and sperm meet. If the egg does not meet with a man's sperm, the blood and the egg flow out of the woman during her menstrual period.
- A girl's first menstruation is the sign that she is now fertile, or able to become pregnant.
- A woman can only become pregnant during several days each month, at the time when she has secretions. The woman's egg is released during the time she has secretions. If she has sex at this time, she can become pregnant.

Female Reproductive Organs and Female Fertility

- The vagina is where a man's penis enters a woman during sexual intercourse. It is also the end of the birth canal, which a baby passes through during childbirth.
- The ovaries produce the woman's egg. An egg is released from the ovaries every month. If the egg meets with a man's sperm, it grows into a baby.
- The fallopian tubes carry the woman's egg from the ovary to the uterus.
- The uterus is where an egg that has been fertilized by a man's sperm grows into a baby. Blood slowly builds in the uterus every month. This blood gives nourishment to the growing baby if the egg and sperm meet. If the egg does not meet with a man's sperm, the blood and the egg flow out of the woman during her menstrual period.
- A girl's first menstruation is the sign that she is now fertile, or able to become pregnant.
- A woman can only become pregnant during several days each month, at the time when she has secretions. The woman's egg is released during the time she has secretions. If she has sex at this time, she can become pregnant.