

EMPOWERING ADOLESCENT GIRLS

Nicole Haberland, Poverty, Gender, and Youth Program

Passages Technical Consultation

March 1, 2016

“Girl-Centered” Approach

- Work in areas where there are high concentrations of **girls at highest risk**
- Identify **specific segments of girls** as the primary beneficiaries
- Build girls’ **social, economic, education and health assets**
- **Measure outcomes** at the level of the girl

Snapshot of PC's Girl-Centered Work



Key program elements

- Reaches **socially isolated girls** with house-to-house recruitment
 - Avoids ‘elite capture’
- Links girls to adult female “**mentors**”
 - Advocates for program participation
 - Bridges to community institutions and services

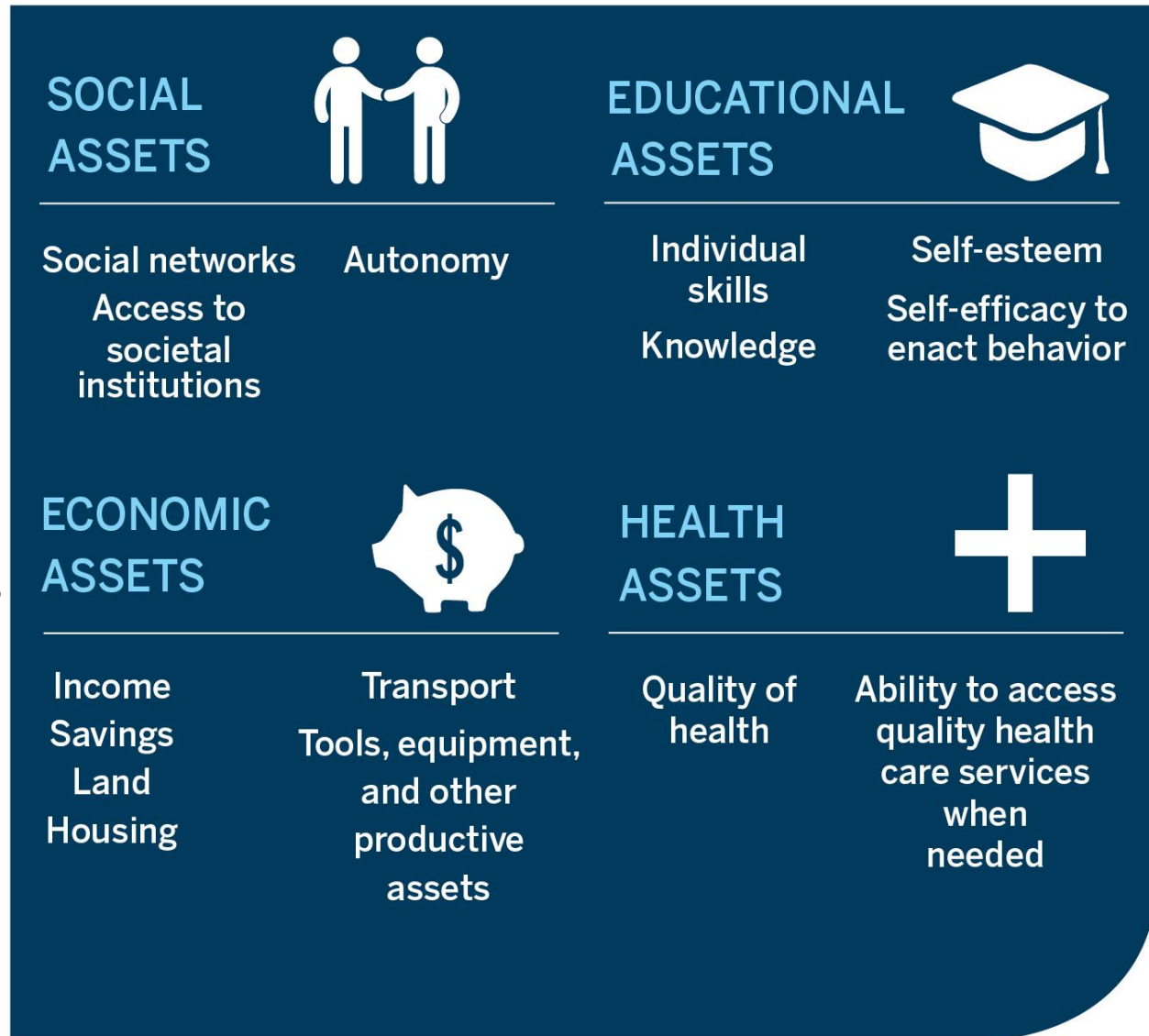
Key program elements

- Meets in **small groups** where participants receive social support and services.
 - Public, “safe” spaces, that are girl-only
 - Up to five times a week
 - Services include wellness checks and ID cards
- Addresses the “whole girl” and **builds assets**.

The “whole girl” approach

- Addresses root social and economic vulnerabilities that place girls at-risk for negative outcomes.
- Builds **four core assets**.
- Expands opportunities for girls to reduce vulnerability.

Population Council asset toolkit:
<http://www.popcouncil.org/research/building-assets-toolkit-developing-positive-benchmarks-for-adolescent-girls>





PROGRAM ELEMENTS

- Safe Spaces Groups
- “Girls Dream” Savings Account
- Health Voucher

Adolescent Girls Empowerment Program

PARTICIPANTS

10,000 vulnerable girls
ages 10-19

PARTNERS

YWCA Zambia, Making Cents International, National Savings and Credit Bank, Ministry of Health

EVALUATION DESIGN

Randomized Controlled Trial

K Austrian, P Hewett

AGEP study arms

Experimental 1
Safe Spaces

Experimental 2
Safe Spaces +
Health Voucher

Experimental 3
Safe Spaces +
Health Voucher+
Savings Account

Control
No Program

BALIKA - 2012-2016



Balika Research Design

- Cluster randomized controlled trial
- Three Intervention Strategies: gender, education, & livelihoods
- Cluster=Union (smallest administrative unit in Bangladesh)
- Random selection: 120 girls aged 12-18 yrs per cluster
- Intent to treat analysis



Results for program and policy change coming in 2016-2018:

- Bangladesh
- Burkina Faso
- India
- Kenya
- Malawi
- Tanzania
- Zambia





The Population Council conducts research and delivers solutions that improve lives around the world. **Big ideas supported by evidence: It's our model for global change.**

